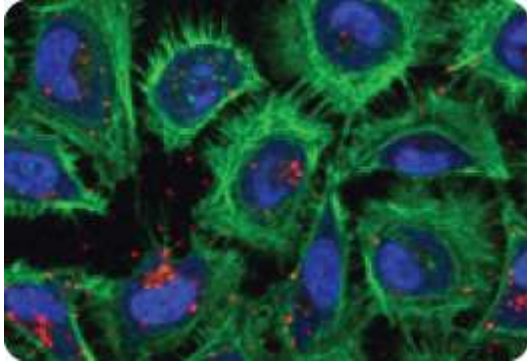
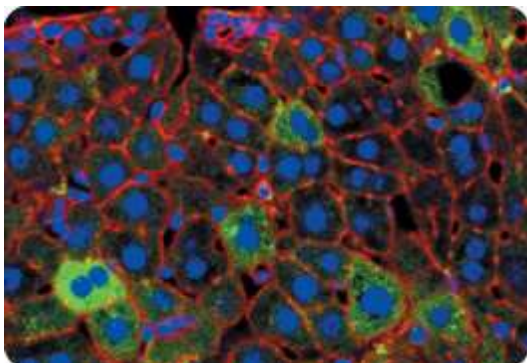


## Figures and Data

[Label IT® Cy®3 Plasmid Delivery Control Allows Quick Assessment of Delivery Efficiency](#)  
[Visualization of \*Label IT®\* Fluorescein Plasmid Delivery Control in Liver Sections](#)  
[Following Tail Vein Injection](#)



**Label IT® Cy®3 Plasmid Delivery Control Allows Quick Assessment of Delivery Efficiency.** HeLa cells were transfected in serum-containing media with the *Label IT®* Cy®3 Plasmid Delivery Control (red) using the *TransIT®*-LT1 Transfection Reagent. Twenty-four hours post-transfection, the cells were fixed, then counterstained to locate the nuclei (blue) and to stain the actin (green).



**Visualization of *Label IT®* Fluorescein Plasmid Delivery Control in Liver Sections Following Tail Vein Injection.** *TransIT®*-QR Hydrodynamic Delivery Solution was used to deliver 25  $\mu$ g of *Label IT®* Fluorescein Plasmid Control (green) to a mouse using hydrodynamic delivery via the tail vein. One hour post-injection the liver was harvested. Sections were fixed to stain the nuclei (blue) and the actin (red).